

Kirkcaldy Winter Walking Festival

January 2021



Kirkcaldy Winter Walking Festival!

We want to encourage you to wrap up warm, get outdoors and connect with nature in the dreary winter months, so we are re-launching our online programme of walks for winter 2021! The programme has a good mix of self guided routes, so you should be able to find one to suit you, no matter what your needs. The walks were originally submitted by a number of local groups and organisation as part of our Walking Festival in August 2020.

Going out when it's dark and cold might seem unappealing, but taking a break from our screens, and getting some natural light can really improve your mood. As well as improving our physical health, getting outside, doing some exercise and spending some time in nature leads to better sleep, reduced anxiety, reduces your risk of chronic health conditions, improves your immune system and simply makes us happier.

So what are you waiting for? Turn the page, find a route, grab your walking boots & woolly hat, get out there and enjoy!

The Greener Kirkcaldy Team



Competition Time

Winter Walking Photo Competition

We want to see your most beautiful, spectacular or funny walk inspired photographs.

To enter, post your entries on Greener Kirkcaldy Facebook, Instagram or Twitter using **#KirkcaldyWalkFest**, direct message us or email craig@greenerkirkcaldy.org.uk.

Our favourite photograph will win a £30 [Kirkcaldy Gift Card](#).

Closing date is 31st January 2021

Thank you!

Thank you to [Kirkcaldy Ramblers](#), [Fife ABE](#), [Fife Walking](#), [Seafield Environmental Group](#), [Homestart kirkcaldy](#), [Langtoun Tots](#), [Bums Off Seats](#), [Active Fife](#), Tony Wilson, [Kirkcaldy Civic Society](#) and [Walk On Kirkcaldy](#), for providing routes.



Downloadable Routes

The routes have been provided by a number of local organisations, not all of whom are regular walk organisers and who have different goals, so there should be something for everyone, no matter what your ability or interests.

The routes have been mapped using either the [Viewranger](#) or [Koo-moot](#) walking apps. You can simply follow the routes online, but if you want full functionality, such as live navigation option, you may prefer to download the app to your phone. Both apps can be downloaded for free from Google Play Store and Apple App Store. You do not have to pay to download any maps, so please decline or ignore any requests for payment.






Walk Gradings

Easy - suitable for most levels of fitness (leisurely walk)

Moderate - suitable for reasonably fit people

Energetic - suitable for more experienced walkers

Walk Key

	Walking shoes/boots recommended
	Dogs welcome (on a lead)
	Toilet facilities available at the start/end of walk
	Accessible for wheelchair users
	Accessible for pushchairs

Short Walks

Kirkcaldy Galleries to Beveridge Park (Poetry Walk)

This walk was provided by Kirkcaldy Galleries Walk ON group. With many interesting stopping points along the way, it is one of their favourites. You can watch a video showcasing the highlights of this walk too! Why not join them at Galleries on a Wednesday?

Distance: 1 mile **Grade:** Easy    

Start point: Kirkcaldy Train Station

Walk Link: [Kirkcaldy Galleries to Beveridge Park](#)

Submitted by: [WalkOn](#) using [Komoot](#)



Seafeld Wildlife Walk

Local nature expert Tony Wilson shares the wildlife highlights of this popular coastal stretch to Seafeld Tower. What creatures can you spot?

Distance: 0.75 miles

Grade: Easy  

Start point: Seafeld Picnic Area

Walk Link: [Seafeld Wildlife Walk](#)

Submitted by: Tony Wilson using [Viewranger](#)



Longbraes & Raith

A short walk around some of Kirkcaldy's woodlands using core paths. The ABE group love this walk as it allows their learners to get close to nature. They would be delighted if you would share your wild photos of trees, flowers, birds and other wildlife on Greener Kirkcaldy Facebook #KirkcaldyWalkingFestival.

Distance: 3 mile circular route

Start point: Beveridge Park car park, Kirkcaldy

Walk Link: [Longbraes & Raith route](#)

Walk Description: [Longbraes & Raith description](#)

Submitted by: [Fife ABE](#) using [Viewranger](#) **Grade:** Easy  



Historical Walk, Seafield to Kinghorn

This route begins at the old Roperie Walk in what is now Morrisons car park and traces a route along the coast. A number of historical highlights are revealed, including the importance of this stretch of coast to the history of the UK.

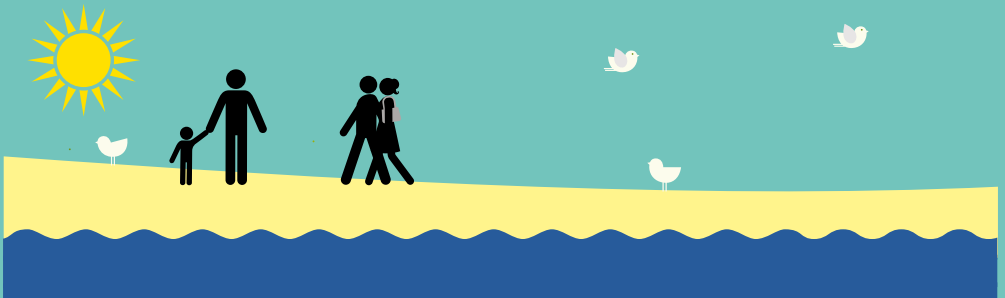
Distance: 2.2 miles

Start point: Morrisons Esplanade car park, Kirkcaldy

Walk Link: [Historical Walk, Seafield to Kinghorn](#)

Submitted by: [Seafield Environmental Group](#) using [Komoot](#)

Grade: Easy  



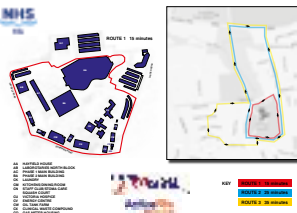
Victoria Hospital Routes

A collection of 3 different length walks are perfect for those who regularly spend time at the hospital and are looking to get a bit of exercise

Distance: 1 mile – 2.5 miles, circular routes

Start point: Victoria Hospital, Hayfield Roadcaldy

Walk Description:



Grade: Easy



Submitted by: [Bums Off Seats, Active Fife](#)

Foraging Walk, Seafield Coast

This beautiful route along the coast to Seafield Tower is full of useful and tasty plants. Why not see how many you can find? This information is for interest only, we do not recommend eating foraged foods unless guided by an expert.

Distance: 0.75 miles

Start point: Seafield Picnic Area

Walk Link: [Foraging Walk Seafield Coast](#)

Walk Video: [Foraging walk video](#)

Submitted by: [Seafield Environmental Group](#) using [Komoot](#)



Grade: Easy  



Foraging Walk Video

Short Children's Walks

Beveridge Park Scavenger Hunt (Kids)

This walk is perfect for families. The route follows the main path around Beveridge Park, as well as the Wizards Walk. Print out the scavenger hunt sheet and see if you can find all the sights as you go!

Distance: 1.5 miles

Start point: Beveridge Park, Abbottshall Road entrance.

Walk Link: [Beveridge Park Scavenger Hunt route](#)

Submitted by: [Homestart](#) using [Komoot](#)

Scavenger sheet:

Kirkcaldy Walking Festival 2020
Beveridge Park Family Walk Activity Sheet
Print out a copy of this sheet and take it with you on your walk.
You can have a copy of this sheet on this website or on your phone.
Please do not use photos or videos of other people's photos.



Grade: Easy



Beveridge Park Tots Bingo (Kids)

This walk follows the main path around the park, so the walk is easy going and perfect for families. You can download the print the bingo sheet and see if you can tick off the items as you go.

Distance: 1.3 miles

Start point: Beveridge Park, Beveridge Park Car Park

Walk Link: [Beveridge Park Tots Bingo route](#)

Submitted by: [Langtoun Tots](#) using [Komoot](#)

Bingo sheet:

Tots' Bingo Walk
See if you can spot the following. Circle the ones you find, writing or drawing in what it is where relevant.



Grade: Easy



Mid-length Walks

Around Kirkcaldy Walk: Coast

Discover a scenic route along Kirkcaldy's coast and up to Gallatown. It is a part of a series of three walks, which together go all the way around Kirkcaldy. The walk is on pavements or hardcore with some steps, and the route will include crossing one beach section.

Distance: 5 miles, total ascent 150m (500ft)

Start point: Basin car park (near Morrisons)

Walk Link: [Around Kirkcaldy Walk: Coast route](#)

Submitted by: [Kirkcaldy Ramblers](#) using [Viewranger](#)



Moderate

Around Kirkcaldy Walk: Woodlands

Explore a woodland route around the edge of Kirkcaldy. It is a part of a series of three walks, which together go all the way around Kirkcaldy. Paths are pavements or hardcore with some rougher ground (paths and grass) to cross.

Distance: 7 miles, total ascent 130m (430ft)

Start point: Rosslyn Street, Kirkcaldy

Walk Link: [Around Kirkcaldy Walk: Woodlands route](#)

Submitted by: [Kirkcaldy Ramblers](#) using [Viewranger](#)



Moderate



Around Kirkcaldy Walk: Seafield

This scenic route through some of the town's woodlands and back along the coast will help you to discover new parts of the Kirkcaldy. It is a part of a series of three walks, which together go all the way around Kirkcaldy. Terrain covers pavements, hardcore, and some uneven paths through woods.

Distance: 4 miles, total ascent 46m (150ft)

Start point: Bottom of Oriel Road, Kirkcaldy

Walk Link: [Around Kirkcaldy Walk: Seafield](#)

Submitted by: [Kirkcaldy Ramblers](#) using [Viewranger](#)



Moderate



Kirkcaldy - Kinghorn Circular

The section of coastal path between Kinghorn and Kirkcaldy, although short is quite different in character from the previous sections of coastal path. Much more rocky and hugging the coastline alongside the railway. There are two options for this walk. The longer options explores the area around Kinghorn Loch and returns via Grangehill.

Distance: 6/7 mile circular route

Start point: Pettycur Road, Kinghorn

Walk Link: [Kirkcaldy - Kinghorn Circular route](#)

Walk Description: [Kirkcaldy - Kinghorn Circular description](#)

Submitted by: [Fife Walking](#) using [Viewranger](#)

Fife Walking

Find Walking Routes in Fife and Beyond

Moderate



Beveridge Park & Raith Lake

Starting at Beveridge Park, this walk takes you through the woodland section, past Raith Lake, up to through Rabbits Brae and returns to the park through woodland. The route is mostly on woodland paths, with some pavement sections

Distance: 5.5miles, total ascent 133m (436ft)

Start point: Beveridge Park car park, Kirkcaldy

Walk Link: [Beveridge Park & Raith Lake route](#)

Submitted by: [Kirkcaldy Ramblers](#) using [Viewranger](#)



Moderate  



Longer Walks

Around Kirkcaldy Walk: Full Loop (Coast, Woodlands, & Seafield)


A combination of the three shorter routes above, this walk will take you along the Esplanade, into the Gallatown, through woods at the edge of the town and back through Seafield. Paths are pavements or hardcore with some rougher ground (paths, beach and grass) to cross.

Distance: 16.5miles, total ascent 360m (1200 ft)

Start point: Bottom of Oriel Road, Kirkcaldy

Walk Link: [Around Kirkcaldy Walk: Full Loop route](#)

Submitted by: [Kirkcaldy Ramblers](#) using [Viewranger](#)

Energetic 



Burntisland - Kinghorn-Kirkcaldy Circular

A walk along the coastal path and then returning via inland quiet roads and tracks. The section between Burntisland and Kinghorn is not possible at high tide without getting wet feet. Two options of this walk are possible either with or without including the Binn.


Distance: 10/11 mile circular route

Start point: Links Car Park, Burntisland

Walk Link: [Burntisland - Kinghorn - Kirkcaldy Circular route](#)

Walk Description: [Burntisland - Kinghorn - Kirkcaldy Circular description](#)

Submitted by: [Fife Walking](#) using [Viewranger](#)

Energetic 

Fife Walking

Find Walking Routes in Fife and Beyond

Virtual Walks

Kirkcaldy High Street Heritage Walk (Video)



Walk Link: [Kirkcaldy High Street Heritage video](#)

Submitted by: [Kirkcaldy Civic Society](#)



Seafield, Inveriel & Linktown Heritage Walk (Video)



Walk Link: [Kirkcaldy High Street Heritage video](#)

Submitted by: [Kirkcaldy Civic Society](#)



Gallatown & Sinclairtown Virtual Heritage Walk (Video)

Gallatown & Sinclairtown
Virtual Heritage Walkabout

Kirkcaldy Civic Society

Walk Link: [Gallatown & Sinclairtown Heritage Video](#)
Submitted by: [Kirkcaldy Civic Society](#)



Socially Distanced Walks

Kirkcaldy Old Kirk Graveyard guided walk - Friday 7th Aug 2pm - explore the “stories from stones” in the centuries-old graveyard - this walk is organised by Kirkcaldy Old Kirk Trust - walk commences at the Old Kirk front porch.

Submitted by: [Kirkcaldy Old Kirk Trust](#) 01592 265499



In the Footsteps of Adam Smith in 18th century Kirkcaldy - Saturday 1st and 8th Aug- explore the life of Adam Smith, globally renowned moral philosopher and economist, in his native Kirkcaldy (includes visit to Adam Smith Global Foundation’s Adam Smith Heritage Centre in Adam Smith Close) - walk commences at the Old Kirk front porch

Submitted by: [Kirkcaldy Civic Society](#)
kirkcaldycivicsociety@gmail.com



More Walks and Walking Groups

You can find even more routes in Kirkcaldy and beyond by following the links below

[Fife Coast and Countryside Trust](#)

[Fife Walking](#)

[Kirkcaldy Ramblers](#)

If you would like to get together with other who enjoy walking, there are a number of groups based in Fife.

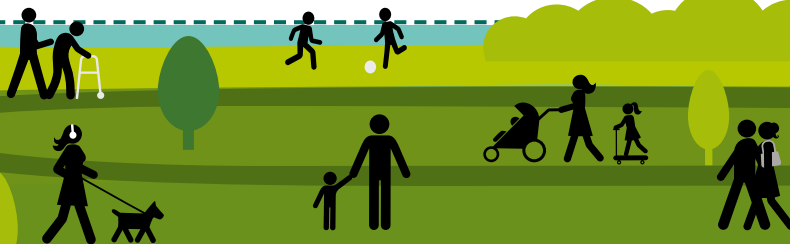
[Fife Walking Club](#)

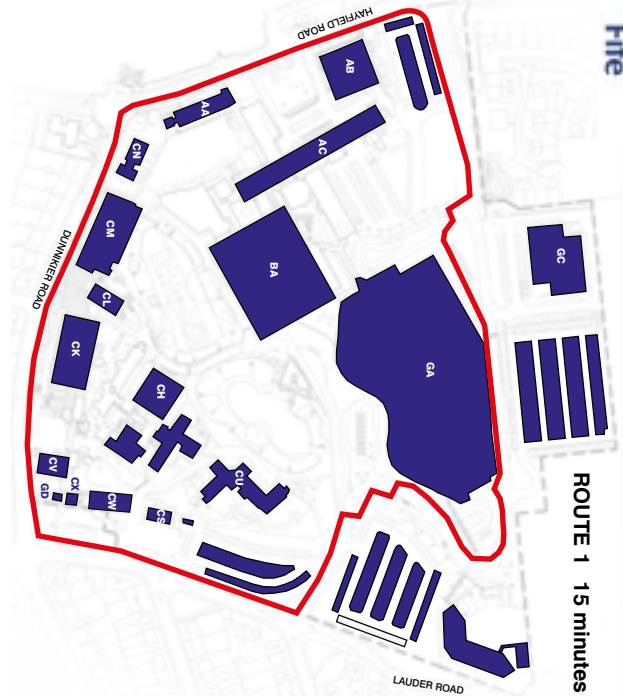
[Kirkcaldy Ramblers](#)

[Bums Off Seats](#)

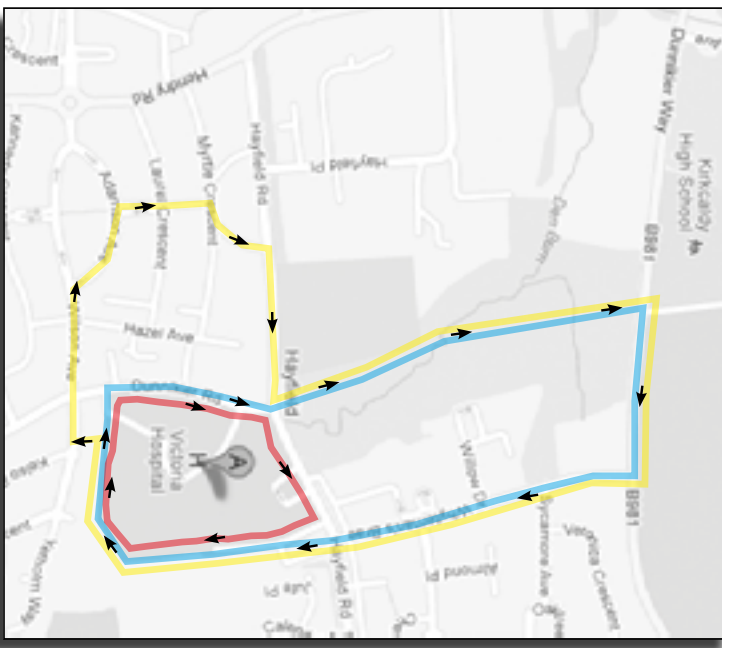
[Walk ON Kirkcaldy](#)

And read about the benefits of walking with [Paths For All](#).





ROUTE 1 15 minutes



KEY

- ROUTE 1 15 minutes
- ROUTE 2 25 minutes
- ROUTE 3 35 minutes

- AA HAYFIELD HOUSE
- AB LABORATORIES NORTH BLOCK
- AC PHASE 1 MAIN BUILDING
- BA PHASE 2 MAIN BUILDING
- CK LAUNDRY
- CM KITCHENS/DINING/ROOM
- CN STAFF CLUB/STOMA CARE
- CU SQUASH COURT
- CV VICTORIA HOSPICE
- CW ENERGY CENTRE
- CX OIL TANK FARM
- GD CLINICAL WASTE COMPOUND
- GD GAS METER HOUSING




Kirkcaldy Walking Festival 2020

Beveridge Park Family Walk Activity Sheet

Start at any point on the main path and follow it right round the park
See how many of the things on this sheet you can spot.

Please don't pick any plants or flowers – spot them and cross them off.

<p style="text-align: center;">Lion</p> 	<p style="text-align: center;">Bowling Club</p> 	<p style="text-align: center;">Rugby Club</p> 	<p style="text-align: center;">Changing Pavilion</p> 
<p style="text-align: center;">Dog Area</p> 	<p style="text-align: center;">Wizards Walk Entrance</p> 	<p style="text-align: center;">Fountain</p> 	<p style="text-align: center;">Something that you think is treasure</p> 
<p style="text-align: center;">Swan</p> 	<p style="text-align: center;">Something fuzzy</p> 	<p style="text-align: center;">A leaf that's been chewed</p> 	<p style="text-align: center;">Pink Flower</p> 
<p style="text-align: center;">Bee</p> 	<p style="text-align: center;">Someone on a scooter</p> 	<p style="text-align: center;">Dog</p> 	<p style="text-align: center;">Something squishy</p> 



Tots' Bingo Walk

See if you can spot the following. Circle the ones you find, writing or drawing in what it is where relevant.

A leaf		A bench		A feather	
A duck		Something tall		Something small	
Something yellow		Something green		Something red	
Something round		Something with wheels		Something that flies	



Greener Kirkcaldy is a community-led charity and development trust working on a local scale to benefit people and our environment. We would like to see a future where everyone is able to heat their home affordably, eat well, and tread more lightly on our planet. Our Walking Festival is part of our Transport project funded by the Scottish Government's Climate Challenge Fund. Find out more on our website: www.greenerkirkcaldy.org.uk



Greener Kirkcaldy is a registered Scottish charity (number SC041412)



www.greenerkirkcaldy.org.uk
info@greenerkirkcaldy.org.uk

01592 858458
 greenerkirkcaldy
 @greenerkdy

8 East Fergus Place, Kirkcaldy
KY1 1XT
Monday - Tuesday 9.30am - 4.30pm
Wednesday 12pm - 4.30pm
Thursday - Friday 9.30am - 4.30pm